

## A Marketing Communications Firm Reduced Its Billing Losses

With Halosys, a Unified Enterprise Mobile Platform

**Rapidly build, integrate, secure, manage, and deploy mobile apps**

Simplify Enterprise Mobility · Accelerate App Dev and Roll-out

### **Our Client**

a marketing communication services provider, is a global leader in providing brand and advertising services to over 5000 clients in 100+ countries through 1500+ agencies.



# Halosys enabled the global workforce to fill timesheets from anywhere and at anytime with a mobile app

## Opportunity

Our client wanted to improve its billing processes with a new mobility solution to achieve its business goals. Key issues that our client faced were:

- Billing losses due to inaccurate timesheets and delayed invoices
- Inefficiencies and reduced productivity as employees, who usually work out of client offices, had to return to base locations to fill timesheets



## Solution

*With Halosys as the mobile development platform, Sonata helped the client in building and rolling out the following solutions:*

- A single mobile timesheet app for employees to fill timesheets from anywhere, even from outside the enterprise network
- Integration of the mobile timesheet application with geo-specific AX backend systems for data synchronization; the same app could be used across geographies for a seamless experience
- Platform based approach to mobile app development leveraging reusable components, templates and libraries, and a cloud-based secure and scalable platform

## Key Features

- Access to the timesheet and related enterprise workflows using a mobile app
- Offline mode to allow app usage in absence of network connectivity
- Notification engine for contextual messages and alerts across the workflow
- Integration with enterprise systems for seamless synchronization of timesheet data to AX backend systems
- Cloud platform acts as a middleware between the enterprise systems and mobile app

With Halosys, Sonata not only solved the immediate problem of billing losses, but also laid the foundation for rapid development and roll out of field force mobility apps.

**10,000+ USERS**

ACCESS THE TIMESHEET  
In the new ecosystem supported  
by the Halosys platform

## Key Results



### IMPROVED ACCURACY

Employee were able to fill-up the timesheet immediately after completing the activity eliminating chances of error



### EASE OF ACCESS

Single mobile app for employees to access the timesheet anytime, anywhere: company's premises, client's offices and on the road.



### REDUCED REVENUE LEAKAGE

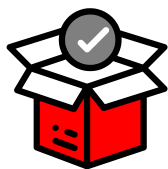
Accurate and timely submission of timesheet reduced billing losses



### FOUNDATION FOR ENTERPRISE MOBILITY

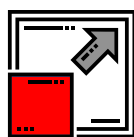
Platform approach laid the foundation for future mobile apps with simplified connectivity to enterprise systems

## Halosys Platform Key Features



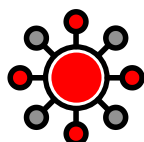
### OPEN

Development with micro-services architecture standards and security to enable enterprise policies



### SCALABLE

Unrestricted number of enterprise users, apps, and connectors to systems on a single platform instance



### CONNECTED

Mobile connectivity to multiple enterprise systems and data sources, with offline app management



### INTELLIGENT

Omni-channel context aware notification rule engine (US Patented) for enhanced user experience

### MOBILE APP DEVELOPMENT

Accelerate app development | Build engaging & consistent user experience | Single instance for all enterprise apps | Reduce development effort with reusable components, templates, libraries

#### Apps

- SDK for Native Apps (iOS, Android, and Windows), Web Apps (HTML5, JavaScript), and Hybrid
- Workflow Modeling, Rule / Event Driven Interactions, Reusable Templates & Libraries, Role Management
- Experience Management, State Retention
- Context-Aware Rule Engine for Notifications (using web, SMS, E-mail and Push Notifications), App Usage Metrics, Test Center

#### Device

- Access to Device Features: GPS, Beacons, Location Services, Camera, Barcode Scanning
- Offline Device Usage & Data Synchronization

## ENTERPRISE APP INTEGRATION AND SECURITY

Leverage pre-built connections to quickly integrate with enterprise systems | Seamless connectivity to enterprise systems | Repurpose enterprise data for multiple apps | Provide enterprise level security

### Integration

- Connectivity to leading enterprise systems (Oracle, SAP, MS Dynamics among others) and legacy systems through industry standard protocols
- Develop And Deploy Multiple Apps on Single Backend, MobileFirst Data, Unified Data View

### Security

- Comprehensive enterprise-level security and policies for Devices, Apps, User, and Data
- Device security by remote wipe of app data and remote user lock
- Data security by end-to-end data encryption
- App security using application security keys such as app keys and secret keys for each app
- User security by different authentication mechanisms (LDAP, SAML, OAUTH) and user activation & deactivation



## MOBILE APP DEPLOYMENT AND MANAGEMENT

Launch apps in weeks, not months | Monitor apps for usage | Control and manage app lifecycle through development, release, and updates

### DevOps Support

- Agile Development support, Continuous Integration support, Test Automation support
- Version And Release Management, Monitoring Analytics, App Performance Management

### Deployment

- Backend Deployment on Public, Private Cloud
- Simplified Provisioning; Support for Micro-Services Based Architecture

### Management

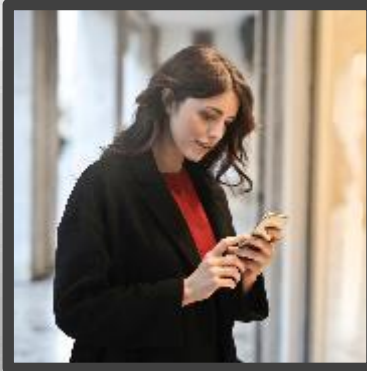
- End-to-end App Lifecycle Management, App Updates, Management Console
- Enterprise/Private App Store, Support for Public App Store, Feedback Mechanisms, App analytics & logs



# WHY SONATA?

Our focus, depth of understanding and proven expertise in Retail Systems of Engagement make us stand out among our peers. We help retailers retain and enhance their customer base and provide personalized and consistent shopping experience across all channels through deeper business insights. Sonata's expertise stems from:

- 10+ years of experience working with Fortune 500 companies and 200+ successful implementations
- Retail Platform IP solutions that integrate Omni-Channel Commerce, Mobility, Social Commerce, Analytics & Cloud
- Experience with leading retail technologies: SAP Hybris, Microsoft Dynamics AX, Oracle, JDA
- Industry ready solution assets that reduce TCO and time-to-market
- Proven large scale implementations
- Global delivery model: Reach, Quality & Cost Effective service



Sonata's platformation approach helps clients to choose a solution that best fits their needs; balancing readily available platforms and solution customization

1. Sonata READY: End-to-end, industry-specific digital business platforms
2. Sonata ACCELERATE: Deploy popular horizontal platforms adding required functionality
3. Sonata CUSTOM: Engineer custom platforms that deliver unique digital capability and scalability

Sonata Software is a global IT solutions firm focused on enabling platform based digital business and technology transformation for enterprises in the Travel, Retail, Distribution and Software industries. Sonata's products and platforms, anchored on its proprietary Platformation methodology, reflect the company's commitment to enable connected, intelligent, open and scalable business systems.

Sonata's portfolio of products and platforms include Rezipia Digital Travel Platform, Brick & Click Retail Platform, Modern Distribution Platform, Kartopia E-Commerce Platform, Halosys Unified Enterprise Mobility Platform and RAPID DevOps, CloudOps and Testing Platform. These platforms have been deployed by leading enterprises across the globe to achieve future ready digital businesses.



USA | Dallas · Fremont · Bridgewater · Redmond · Atlanta · Chicago

UK & Europe | Brentford · Frankfurt · Amsterdam · Paris · Copenhagen

Asia | Bangalore · Hyderabad · Singapore · Dubai · Doha

ANZ | Sydney · Melbourne

